

Opturo - Performance & Attribution Report - GLOBAL_GROWTH / MSCIEAFE - Valuation Period: 03-Jan-2011 to 30-Dec-2011

Fund: GLOBAL Growth

Market: Russell 1000

Valuation Period: 03-Jan-2011 - 30-Dec-2011

Benchmark: MSCI EAFE

Reporting Currency: US DOLLARS

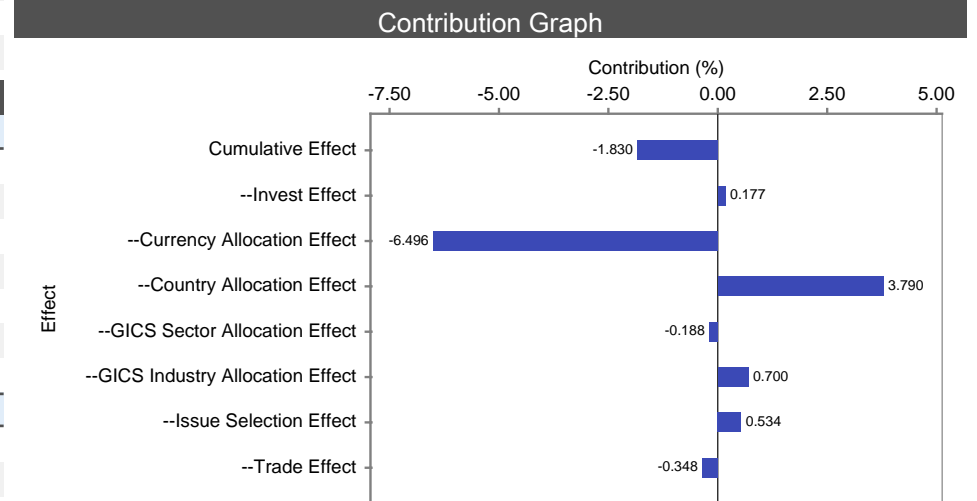
Return Summary			
Statistic	Fund	Benchmark	Active
Cumulative Return	(14.44%)	(12.61%)	(1.83%)
Cumulative Transaction Cost	(2.59%)		
Cumulative VAMI	\$855	\$873	(18)
Worst 20 Days	(15.69%)	(15.51%)	(4.67%)
Best 20 Days	13.44%	13.32%	3.81%
Worst Day	(5.54%)	(5.03%)	(0.78%)
Best Day	4.36%	4.98%	1.01%
Valley	(21.52%)	(18.97%)	(5.88%)
Peak	5.09%	10.17%	0.38%
Batting Average	51.54%	53.08%	49.23%

Risk Summary			
Annualized Statistic	Fund	Benchmark	Active
Standard Deviation	21.77%	23.27%	(1.50%)
Tracking Error	4.84%	--	4.84%
Downside Deviation (10.00%)	16.78%	17.76%	(0.99%)
Information Ratio	(0.38)	--	(0.38)
Sharpe Ratio (5.00%)	(0.83)	(0.67)	(0.16)
Sortino Ratio (10.00%)	(1.50)	(1.30)	(0.20)
Turnover	279.52%		

Statistic	Fund	Benchmark	Active
Beta (/Market)	0.66	0.67	(0.01)
Maximum Drawdown	(25.32%)	(26.45%)	1.13%
Days In Maximum Drawdown	111	111	--
Days To Recover	64	64	--
Correlation (/Benchmark)	0.98	1.00	(0.02)
R-Squared (/Benchmark)	0.96	1.00	(0.04)

Market Value Summary		
Statistic	Fund	Cash
Begin Market Value (in millions)	5,090.64	129.51
Average Market Value (in millions)	4,264.86	69.00
External Flow Value (in millions)	(1,268.30)	
End Market Value (in millions)	3,246.66	40.40

Decision Attribution Summary		
Attribution Effect	Active Gain	Active Return
Cumulative Effect	(129,396,935)	(1.83%)
--Invest Effect	(14,128,206)	0.18%
--Currency Allocation Effect	(327,103,410)	(6.50%)
--Country Allocation Effect	171,557,328	3.79%
--GICS Sector Allocation Effect	(32,365)	(0.19%)
--GICS Industry Allocation Effect	37,040,526	0.70%
--Issue Selection Effect	18,448,539	0.53%
--Trade Effect	(15,179,347)	(0.35%)



*** The methodology here employed to determine the weights and returns of components of the fund for a single period is Trades-at-Noon Dietz.

*** The methodology here employed to determine the reference point for allocation effects below each decision's level of implementation is Brinson Fachler.

Opturo - Performance & Attribution Report - GLOBAL_GROWTH / MSCIEAFE - Valuation Period: 03-Jan-2011 to 30-Dec-2011

Decision Attribution Summary

Attribution Components	Active Return	Active Gain	Active Beta	Active Correlation	Active Days In Maximum Drawdown	Active Days To Recover	Active Downside Deviation	Active Information Ratio	Active Maximum Drawdown	Active R-Squared	Active Sharpe Ratio	Active Sortino Ratio	Active Standard Deviation	Tracking Error
Cumulative Effect	(1.83%)	(129,396,935)	(0.01)	(0.02)	--	--	(0.06%)	(0.03)	1.13%	(0.04)	(0.01)	(0.01)	(0.09%)	0.30%
--Invest Effect	0.18%	(14,128,206)	(0.00)	(0.00)	--	--	(0.01%)	(0.06)	0.14%	(0.00)	(0.00)	(0.00)	(0.01%)	0.02%
--Currency Allocation Effect	(6.50%)	(327,103,410)	(0.08)	(0.06)	--	--	(0.07%)	(0.00)	(1.32%)	(0.11)	(0.02)	(0.03)	(0.11%)	0.47%
--Country Allocation Effect	3.79%	171,557,328	0.05	0.04	--	--	(0.01%)	0.01	2.31%	0.09	0.01	0.01	(0.02%)	(0.22%)
--GICS Sector Allocation Effect	(0.19%)	(32,365)	0.01	(0.00)	--	--	0.02%	(0.00)	(0.56%)	(0.00)	(0.00)	0.00	0.02%	0.01%
--GICS Industry Allocation Effect	0.70%	37,040,526	0.01	(0.00)	--	--	0.02%	0.01	0.07%	(0.00)	0.00	0.00	0.03%	0.00%
--Issue Selection Effect	0.53%	18,448,539	(0.00)	(0.00)	--	--	(0.01%)	0.01	0.59%	(0.01)	0.00	0.00	(0.00%)	0.02%
--Trade Effect	(0.35%)	(15,179,347)	(0.00)	(0.00)	--	--	0.00%	(0.00)	(0.09%)	(0.00)	(0.00)	(0.00)	(0.00%)	0.00%

Opturo - Performance & Attribution Report - GLOBAL_GROWTH / MSCIEAFE - Valuation Period: 03-Jan-2011 to 30-Dec-2011
Top & Bottom Return Decisions

Decision Path: Segment (Decision)	Decision Effect
TOP DECISIONS	
US DOLLARS (Country)	9.52%
JAPANESE YEN -> JAPAN -> CONSUMER DISCRETIONARY (GICS Industry)	0.75%
JAPANESE YEN -> JAPAN -> INFORMATION TECHNOLOGY (GICS Industry)	0.59%
HONG KONG DOLLAR -> CHINA (GICS Sector)	0.56%
JAPANESE YEN -> JAPAN -> INFORMATION TECHNOLOGY -> INTERNET SOFTWARE & SERVICES (Issue Selection)	0.22%
BRITISH POUNDS -> UNITED KINGDOM -> FINANCIALS (GICS Industry)	0.21%
DANISH KRONE -> DENMARK (GICS Sector)	0.20%
BRITISH POUNDS -> UNITED KINGDOM -> CONSUMER DISCRETIONARY -> MULTILINE RETAIL (Issue Selection)	0.18%
Invest	0.18%
SWISS FRANC -> SWITZERLAND -> FINANCIALS -> CAPITAL MARKETS (Issue Selection)	0.17%
All Other Positive Contributions of Decisions	3.96%
BOTTOM DECISIONS	
Currency	(6.50%)
EURO (Country)	(1.63%)
BRITISH POUNDS (Country)	(1.50%)
JAPANESE YEN (Country)	(1.08%)
HONG KONG DOLLAR (Country)	(0.85%)
SWISS FRANC (Country)	(0.51%)
EURO -> FRANCE (GICS Sector)	(0.46%)
Trade	(0.35%)
SWISS FRANC -> INDIA (GICS Sector)	(0.21%)
BRITISH POUNDS -> UNITED KINGDOM -> UTILITIES -> MULTI-UTILITIES (Issue Selection)	(0.21%)
All Other Negative Contributions of Decisions	(5.06%)

Opturo - Performance & Attribution Report - GLOBAL_GROWTH / MSCIEAFE - Valuation Period: 03-Jan-2011 to 30-Dec-2011
Top & Bottom Value Decisions

Decision Path: Segment (Decision)	Decision Value Effect
TOP DECISIONS	
US DOLLARS (Country)	415,147,287
JAPANESE YEN -> JAPAN -> CONSUMER DISCRETIONARY (GICS Industry)	34,048,481
HONG KONG DOLLAR -> CHINA (GICS Sector)	30,804,145
JAPANESE YEN -> JAPAN -> INFORMATION TECHNOLOGY (GICS Industry)	27,487,485
BRITISH POUNDS -> UNITED KINGDOM -> FINANCIALS (GICS Industry)	9,876,013
JAPANESE YEN -> JAPAN -> INFORMATION TECHNOLOGY -> INTERNET SOFTWARE & SERVICES (Issue Selection)	9,056,959
DANISH KRONE -> DENMARK (GICS Sector)	8,710,055
BRITISH POUNDS -> UNITED KINGDOM -> CONSUMER DISCRETIONARY -> MULTILINE RETAIL (Issue Selection)	7,834,468
EURO -> INDIA (GICS Sector)	6,767,591
BRITISH POUNDS -> UNITED KINGDOM -> INDUSTRIALS -> COMMERCIAL SERVICES & SUPPLIES (Issue Selection)	6,476,089
All Other Positive Contributions of Decisions	166,995,054
BOTTOM DECISIONS	
Currency	(327,103,410)
EURO (Country)	(63,414,102)
BRITISH POUNDS (Country)	(62,216,887)
JAPANESE YEN (Country)	(46,227,137)
HONG KONG DOLLAR (Country)	(43,191,721)
SWISS FRANC (Country)	(22,017,480)
EURO -> FRANCE (GICS Sector)	(18,953,909)
Trade	(15,179,347)
Invest	(14,128,206)
SINGAPORE DOLLAR -> SINGAPORE -> FINANCIALS (GICS Industry)	(9,663,432)
All Other Negative Contributions of Decisions	(230,504,931)

Opturo - Performance & Attribution Report - GLOBAL_GROWTH / MSCIEAFE - Valuation Period: 03-Jan-2011 to 30-Dec-2011

Top & Bottom Holdings

Ticker	Description	Fund Weight (Average)	Benchmark Weight (Average)	Active Weight (Average)	Fund Ctrb	Benchmark Ctrb	Active Ctrb	Fund Total Return (Trade)	Fund Market Value (Average)	Fund Market Value (Begin)
TOP CONTRIBUTORS										
USD	USD/GBP FWD 20110923 STAR USD	2.34%	--	2.34%	(0.03%)	--	(0.03%)	(0.37%)	97,876,481	--
USD	USD/EUR FWD 20110919 STAR USD	2.20%	--	2.20%	(0.03%)	--	(0.03%)	(0.37%)	92,507,357	--
USD	USD/JPY FWD 20110921 STAR USD	2.10%	--	2.10%	(0.03%)	--	(0.03%)	(0.37%)	88,823,290	--
USD	USD/GBP FWD 20111222 STAR USD	0.78%	--	0.78%	(0.01%)	--	(0.01%)	(0.21%)	26,133,097	--
MO	GREE INC	0.51%	0.02%	0.49%	0.46%	0.02%	0.44%	166.21%	20,808,260	11,470,564
USD	USD/JPY FWD 20110316 STAR USD	1.04%	--	1.04%	(0.01%)	--	(0.01%)	(0.20%)	51,922,175	--
USD	USD/CAD FWD 20110922 STAR USD	0.42%	--	0.42%	(0.01%)	--	(0.01%)	(0.37%)	17,705,566	--
USD	USD/EUR FWD 20111221 STAR USD	0.33%	--	0.33%	(0.00%)	--	(0.00%)	(0.10%)	11,303,207	--
USD	USD/CHF FWD 20110920 STAR USD	0.37%	--	0.37%	(0.00%)	--	(0.00%)	(0.37%)	15,816,532	--
USD	USD/GBP FWD 20110317 STAR USD	1.14%	--	1.14%	(0.02%)	--	(0.02%)	(0.22%)	57,046,618	--
BOTTOM CONTRIBUTORS										
HPHT	HUTCHISON PORT HOLDINGS TR-U	--	0.02%	(0.02%)	--	(0.01%)	0.01%	--	--	--
EUR	EUR/USD FWD 20110919 STAR USD	(2.18%)	--	(2.18%)	0.41%	--	0.41%	(4.90%)	(91,683,023)	--
TFG	TETRAGON FINANCIAL GROUP LTD	--	0.00%	(0.00%)	--	(0.00%)	0.00%	--	--	--
USD	USD/JPY FWD 20110614 STAR USD	0.68%	--	0.68%	(0.01%)	--	(0.01%)	(0.09%)	33,099,264	--
USD	USD/EUR FWD 20110613 STAR USD	0.77%	--	0.77%	(0.01%)	--	(0.01%)	(0.09%)	37,529,338	--
GBP	GBP/USD FWD 20110923 STAR USD	(2.32%)	--	(2.32%)	0.34%	--	0.34%	(3.73%)	(96,979,294)	--
JPY	JPY/USD FWD 20110614 STAR USD	(0.68%)	--	(0.68%)	0.20%	--	0.20%	(2.29%)	(33,456,548)	--
JPY	JPY/USD FWD 20110921 STAR USD	(2.15%)	--	(2.15%)	(0.36%)	--	(0.36%)	5.78%	(90,681,337)	--
CHEME	CHEMOIL ENERGY LTD	--	0.00%	(0.00%)	--	(0.00%)	0.00%	--	--	--
EUR	EUR/USD FWD 20111221 STAR USD	(0.32%)	--	(0.32%)	0.18%	--	0.18%	(5.28%)	(11,044,414)	--
TOP OVERWEIGHTS										
USD	USD/GBP FWD 20110923 STAR USD	2.34%	--	2.34%	(0.03%)	--	(0.03%)	(0.37%)	97,876,481	--
USD	USD/GBP FWD 20110617 STAR USD	2.22%	--	2.22%	(0.02%)	--	(0.02%)	(0.22%)	109,372,011	--
USD	USD/EUR FWD 20110919 STAR USD	2.20%	--	2.20%	(0.03%)	--	(0.03%)	(0.37%)	92,507,357	--
USD	USD/JPY FWD 20110921 STAR USD	2.10%	--	2.10%	(0.03%)	--	(0.03%)	(0.37%)	88,823,290	--
DATA	SOFTBANK CORP	1.69%	0.25%	1.44%	(0.22%)	(0.04%)	(0.18%)	(15.67%)	72,193,735	78,692,775
USD=X	US DOLLARS	1.36%	--	1.36%	(0.02%)	--	(0.02%)	(1.14%)	58,082,952	123,343,379
BAM	BROOKFIELD ASSET MANAGE-CL A	1.35%	--	1.35%	(0.26%)	--	(0.26%)	(17.29%)	57,735,033	71,333,646
USD	USD/JPY FWD 20111220 STAR USD	1.32%	--	1.32%	(0.01%)	--	(0.01%)	(0.29%)	44,401,839	--
SMFG	SUMITOMO MITSUI FINANCIAL GR	1.64%	0.34%	1.30%	(0.40%)	(0.07%)	(0.33%)	(19.83%)	70,054,810	110,976,814
CNA	CENTRICA PLC	1.40%	0.21%	1.18%	(0.15%)	(0.02%)	(0.13%)	(10.54%)	59,073,353	60,000,432
BOTTOM UNDERWEIGHTS										
GBP	GBP/USD FWD 20110923 STAR USD	(2.32%)	--	(2.32%)	0.34%	--	0.34%	(3.73%)	(96,979,294)	--

Opturo - Performance & Attribution Report - GLOBAL_GROWTH / MSCIEAFE - Valuation Period: 03-Jan-2011 to 30-Dec-2011

Ticker	Description	Fund Weight (Average)	Benchmark Weight (Average)	Active Weight (Average)	Fund Ctrb	Benchmark Ctrb	Active Ctrb	Fund Total Return (Trade)	Fund Market Value (Average)	Fund Market Value (Begin)
GBP	GBP/USD FWD 20110617 STAR USD	(2.26%)	--	(2.26%)	(0.18%)	--	(0.18%)	1.40%	(111,053,834)	--
EUR	EUR/USD FWD 20110919 STAR USD	(2.18%)	--	(2.18%)	0.41%	--	0.41%	(4.90%)	(91,683,023)	--
JPY	JPY/USD FWD 20110921 STAR USD	(2.15%)	--	(2.15%)	(0.36%)	--	(0.36%)	5.78%	(90,681,337)	--
HSBA	HSBC HOLDINGS PLC	--	1.39%	(1.39%)	--	(0.31%)	0.31%		--	
JPY	JPY/USD FWD 20111220 STAR USD	(1.31%)	--	(1.31%)	0.10%	--	0.10%	(1.78%)	(44,030,289)	--
NESM.F	NESTLE SA-REG	0.44%	1.67%	(1.23%)	(0.09%)	0.01%	(0.10%)	(13.41%)	15,354,088	50,248,059
EUR	EUR/USD FWD 20110315 STAR USD	(1.19%)	--	(1.19%)	(0.17%)	--	(0.17%)	2.24%	(59,596,072)	--
GBP	GBP/USD FWD 20110317 STAR USD	(1.15%)	--	(1.15%)	(0.01%)	--	(0.01%)	(0.32%)	(57,594,448)	--
BHP	BHP BILLITON LTD	--	1.15%	(1.15%)	--	(0.26%)	0.26%		--	

Opturo - Performance & Attribution Report - GLOBAL_GROWTH / MSCIEAFE - Valuation Period: 03-Jan-2011 to 30-Dec-2011

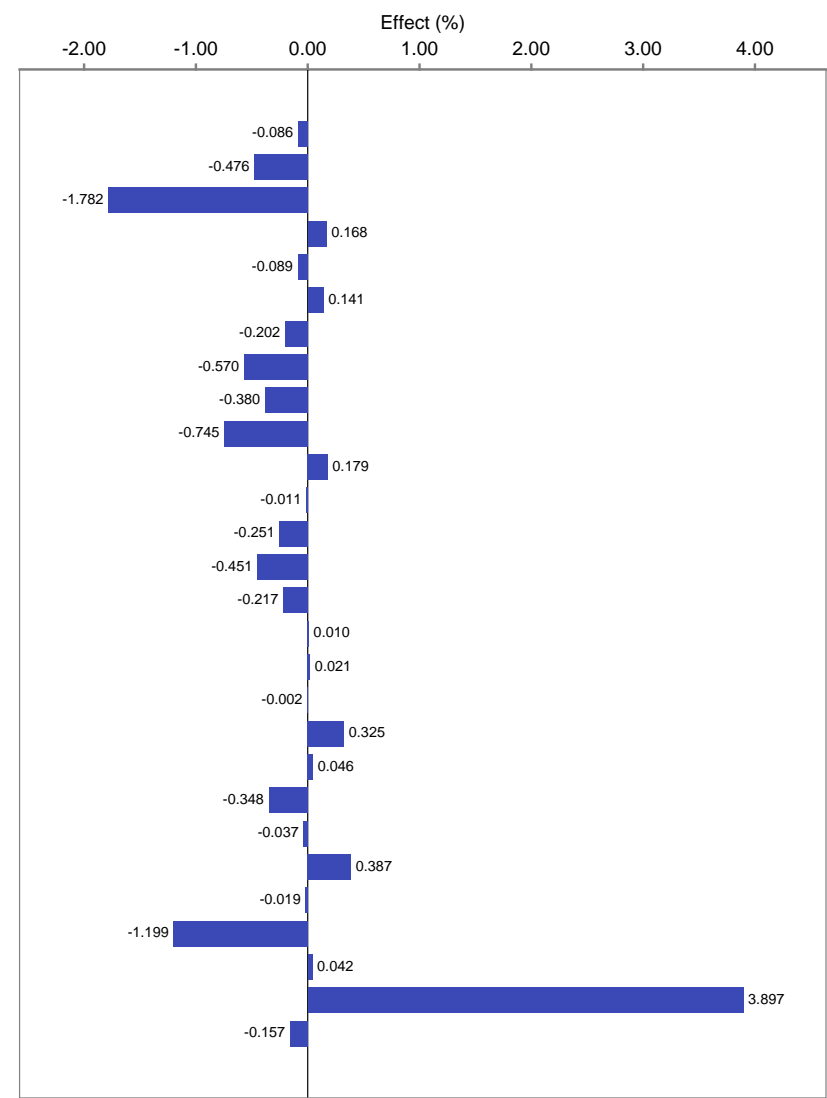
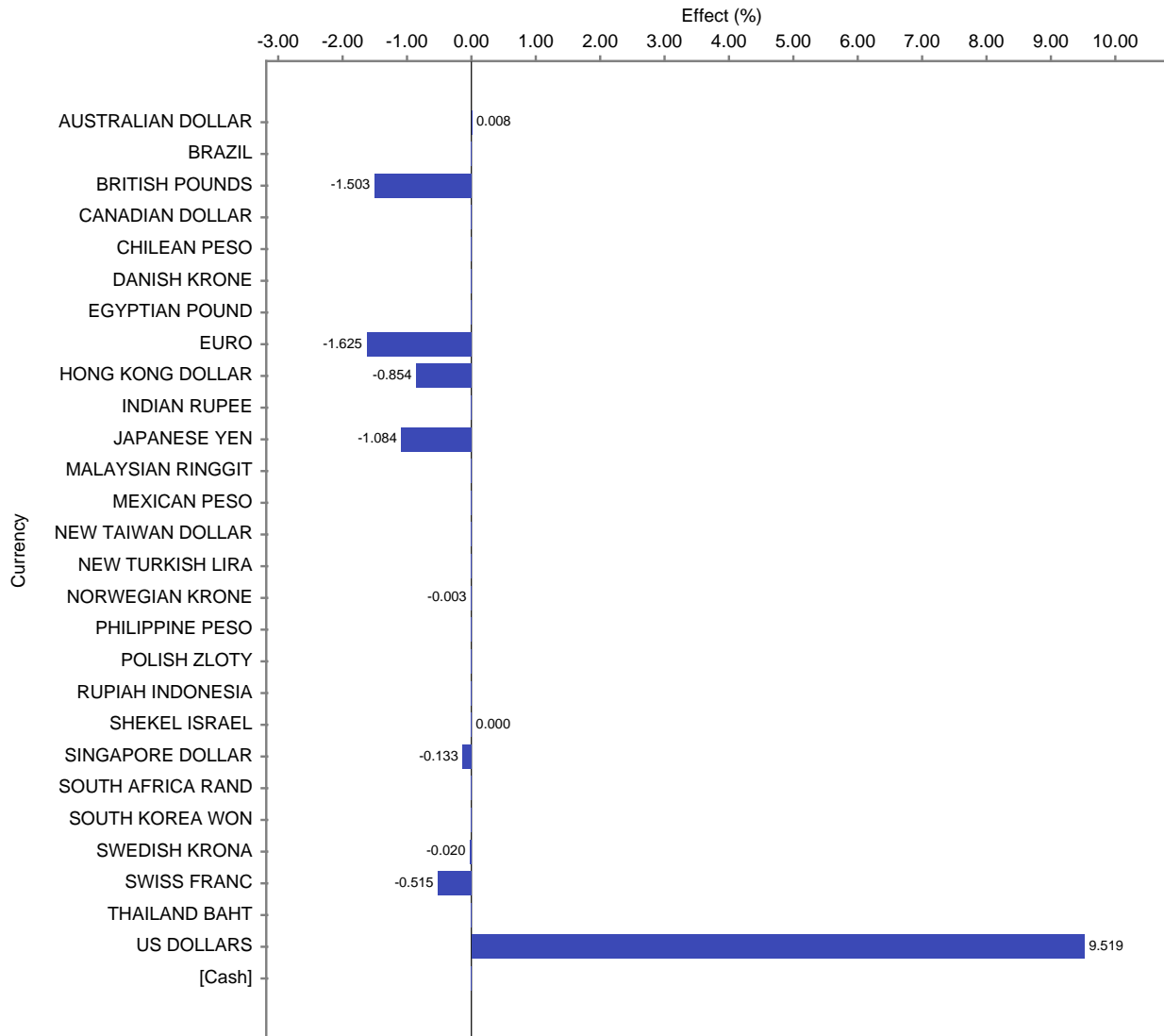
Currency

Currency	Fund Ctrb	Benchmark Ctrb	Active Ctrb	Fund Weight (Average)	Benchmark Weight (Average)	Active Weight (Average)	Fund Total Return	Benchmark Total Return	Country Allocation Effect	Total Effect
AUSTRALIAN DOLLAR	(0.09%)	(1.04%)	0.95%	0.28%	8.80%	(8.52%)	25.44%	(11.83%)	0.01%	(0.09%)
BRAZIL	(0.81%)	--	(0.81%)	3.52%	--	3.52%	(18.74%)	--	--	(0.48%)
BRITISH POUNDS	(1.40%)	(0.78%)	(0.63%)	17.33%	21.75%	(4.42%)	(12.62%)	(3.72%)	(1.50%)	(1.78%)
CANADIAN DOLLAR	(0.21%)	--	(0.21%)	3.66%	--	3.66%	(7.01%)	--	--	0.17%
CHILEAN PESO	(0.13%)	--	(0.13%)	0.39%	--	0.39%	(23.39%)	--	--	(0.09%)
DANISH KRONE	(0.04%)	(0.20%)	0.16%	1.17%	1.11%	0.07%	(4.61%)	(17.43%)	0.00%	0.14%
EGYPTIAN POUND	(0.23%)	--	(0.23%)	0.23%	--	0.23%	(51.32%)	--	--	(0.20%)
EURO	(2.97%)	(5.25%)	2.28%	14.92%	28.84%	(13.91%)	(35.87%)	(18.46%)	(1.63%)	(0.57%)
HONG KONG DOLLAR	(1.08%)	(0.52%)	(0.55%)	4.71%	2.86%	1.85%	(33.57%)	(17.50%)	(0.85%)	(0.38%)
INDIAN RUPEE	(0.90%)	--	(0.90%)	1.90%	--	1.90%	(37.58%)	--	--	(0.74%)
JAPANESE YEN	(1.00%)	(2.91%)	1.91%	9.85%	21.81%	(11.96%)	(20.94%)	(12.88%)	(1.08%)	0.18%
MALAYSIAN RINGGIT	0.02%	--	0.02%	0.31%	--	0.31%	3.36%	--	--	(0.01%)
MEXICAN PESO	(0.28%)	--	(0.28%)	0.62%	--	0.62%	(40.04%)	--	--	(0.25%)
NEW TAIWAN DOLLAR	(0.64%)	--	(0.64%)	0.70%	--	0.70%	(61.85%)	--	--	(0.45%)
NEW TURKISH LIRA	(0.25%)	--	(0.25%)	0.58%	--	0.58%	(36.81%)	--	--	(0.22%)
NEW ZEALAND DOLLAR	--	0.00%	(0.00%)	--	0.17%	(0.17%)	--	1.12%	--	(0.02%)
NORWEGIAN KRONE	(0.13%)	(0.17%)	0.04%	0.39%	1.07%	(0.68%)	(33.24%)	(14.95%)	(0.00%)	0.01%
PHILIPPINE PESO	(0.03%)	--	(0.03%)	0.17%	--	0.17%	(11.50%)	--	--	0.02%
POLISH ZLOTY	(0.01%)	--	(0.01%)	0.02%	--	0.02%	(13.21%)	--	--	(0.00%)
RUPIAH INDONESIA	0.07%	--	0.07%	2.02%	--	2.02%	5.92%	--	--	0.33%
SHEKEL ISRAEL	(0.17%)	(0.25%)	0.07%	0.44%	0.74%	(0.30%)	(26.57%)	(29.13%)	0.00%	0.05%
SINGAPORE DOLLAR	(0.69%)	(0.34%)	(0.35%)	2.12%	1.79%	0.33%	(30.02%)	(18.70%)	(0.13%)	(0.35%)
SOUTH AFRICA RAND	(0.28%)	--	(0.28%)	1.37%	--	1.37%	(12.11%)	--	--	(0.04%)
SOUTH KOREA WON	(0.19%)	--	(0.19%)	3.10%	--	3.10%	14.38%	--	--	0.39%
SWEDISH KRONA	(0.59%)	(0.50%)	(0.10%)	2.20%	3.17%	(0.97%)	(15.68%)	(15.58%)	(0.02%)	(0.02%)
SWISS FRANC	(1.00%)	(0.64%)	(0.36%)	3.64%	7.86%	(4.22%)	(32.38%)	(8.18%)	(0.51%)	(1.20%)
THAILAND BAHT	(0.03%)	--	(0.03%)	0.57%	--	0.57%	1.68%	--	--	0.04%
US DOLLARS	(1.13%)	(0.02%)	(1.11%)	22.21%	0.03%	22.18%	(4.07%)	(34.34%)	9.52%	3.90%
[Cash]	(0.26%)	--	(0.26%)	1.58%	--	1.58%	(5.84%)	--	--	(0.16%)
Portfolio	(14.44%)	(12.61%)	(1.83%)	100.00%	100.00%	--	(14.44%)	(12.61%)	3.79%	(1.83%)

Opturo - Performance & Attribution Report - GLOBAL_GROWTH / MSCIEAFE - Valuation Period: 03-Jan-2011 to 30-Dec-2011

Country Allocation Effect Graph

Total Effect Graph



Opturo - Performance & Attribution Report - GLOBAL_GROWTH / MSCIEAFE - Valuation Period: 03-Jan-2011 to 30-Dec-2011

Country

Country	Fund Ctrb	Benchmark Ctrb	Active Ctrb	Fund Weight (Average)	Benchmark Weight (Average)	Active Weight (Average)	Fund Total Return	Benchmark Total Return	GICS Sector Allocation Effect	Total Effect
AUSTRALIA	(0.06%)	(1.03%)	0.97%	0.21%	8.75%	(8.54%)	25.39%	(11.84%)	(0.04%)	(0.09%)
AUSTRIA	(0.03%)	(0.15%)	0.12%	0.08%	0.40%	(0.32%)	(4.18%)	(33.69%)	0.01%	0.11%
BAHAMAS	--	(0.00%)	0.00%	--	0.00%	(0.00%)		(7.42%)	--	0.00%
BELGIUM	(0.02%)	(0.16%)	0.15%	0.26%	0.69%	(0.42%)	(3.29%)	(24.18%)	(0.03%)	0.04%
BERMUDA	0.06%	0.00%	0.06%	0.44%	0.16%	0.28%	18.62%	1.06%	(0.02%)	0.07%
BRAZIL	(0.91%)	0.04%	(0.95%)	4.86%	1.82%	3.04%	(19.89%)	2.56%	(0.04%)	(0.83%)
CANADA	(0.46%)	--	(0.46%)	5.52%	--	5.52%	(6.10%)		--	0.64%
CHILE	(0.21%)	--	(0.21%)	0.91%	--	0.91%	(19.67%)		--	(0.03%)
CHINA	(1.04%)	(0.02%)	(1.02%)	3.23%	0.06%	3.18%	(41.45%)	(35.05%)	0.55%	(0.51%)
COLOMBIA	(0.02%)	--	(0.02%)	0.14%	--	0.14%	(34.82%)		--	0.01%
CYPRUS	--	(0.03%)	0.03%	--	0.04%	(0.04%)		(54.15%)	--	0.03%
CZECH REPUBLIC	--	(0.12%)	0.12%	--	0.75%	(0.75%)		(17.47%)	--	0.03%
DENMARK	(0.04%)	(0.20%)	0.16%	1.17%	1.11%	0.07%	(4.61%)	(17.42%)	0.20%	0.14%
EGYPT	(0.23%)	--	(0.23%)	0.23%	--	0.23%	(51.32%)		--	(0.20%)
FAROE ISLANDS	--	(0.00%)	0.00%	--	0.00%	(0.00%)		(24.51%)	--	0.00%
FINLAND	(0.37%)	(0.37%)	0.00%	1.27%	1.02%	0.25%	(22.65%)	(32.86%)	(0.08%)	0.18%
FRANCE	(1.36%)	(1.12%)	(0.24%)	7.01%	7.80%	(0.79%)	(21.92%)	(15.05%)	(0.46%)	(0.06%)
GERMANY	(0.79%)	(1.18%)	0.39%	3.03%	5.72%	(2.69%)	(24.00%)	(20.86%)	(0.09%)	0.24%
GIBRALTAR	--	(0.00%)	0.00%	--	0.01%	(0.01%)		(19.72%)	--	0.00%
GREECE	(0.02%)	(0.17%)	0.16%	0.10%	0.24%	(0.14%)	(11.54%)	(59.36%)	(0.03%)	0.08%
GUERNSEY	--	(0.00%)	0.00%	--	0.07%	(0.07%)		7.26%	--	(0.68%)
HONG KONG	(0.29%)	(0.55%)	0.26%	1.81%	2.96%	(1.15%)	(23.08%)	(17.76%)	(0.02%)	(0.02%)
INDIA	(1.60%)	(0.32%)	(1.28%)	6.16%	5.13%	1.02%	(24.14%)	(6.59%)	(0.08%)	(0.94%)
INDONESIA	0.07%	(0.01%)	0.09%	2.02%	0.09%	1.93%	5.92%	(15.46%)	--	0.33%
IRELAND	0.13%	0.05%	0.09%	0.83%	0.75%	0.07%	18.03%	6.75%	0.02%	0.06%
ISLE OF MAN	--	(0.00%)	0.00%	--	0.01%	(0.01%)		(43.70%)	--	0.00%
ISRAEL	(0.37%)	(0.25%)	(0.13%)	1.31%	0.74%	0.57%	(26.19%)	(29.09%)	0.01%	0.24%
ITALY	(0.25%)	(0.49%)	0.24%	0.94%	2.38%	(1.44%)	(28.68%)	(20.87%)	0.09%	0.11%
JAPAN	(0.97%)	(2.75%)	1.78%	15.25%	22.31%	(7.07%)	(8.87%)	(11.94%)	(0.09%)	0.92%
JERSEY ISLANDS	--	0.00%	(0.00%)	--	0.09%	(0.09%)		4.08%	--	(0.01%)
LIECHTENSTEIN	--	(0.00%)	0.00%	--	0.01%	(0.01%)		(36.01%)	--	0.00%
LUXEMBOURG	(0.09%)	(0.15%)	0.06%	0.28%	0.44%	(0.16%)	(5.14%)	(30.31%)	0.02%	0.09%
MACAO	(0.04%)	0.02%	(0.05%)	0.02%	0.09%	(0.07%)	(11.65%)	24.60%	--	(0.06%)
MALAYSIA	0.02%	0.01%	0.01%	0.12%	0.07%	0.05%	2.60%	12.25%	--	(0.01%)

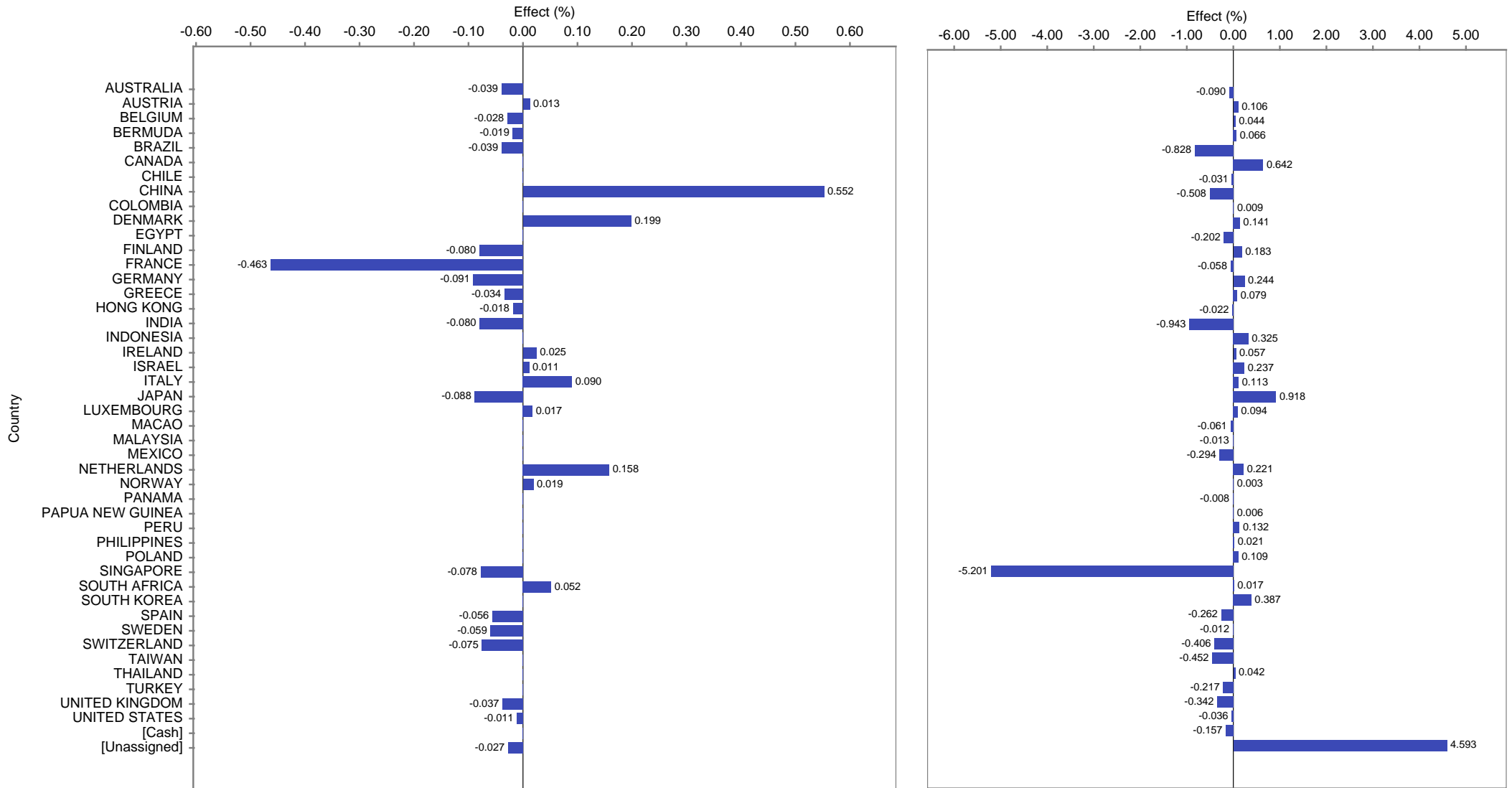
Opturo - Performance & Attribution Report - GLOBAL_GROWTH / MSCIEAFE - Valuation Period: 03-Jan-2011 to 30-Dec-2011

Country	Fund Ctrb	Benchmark Ctrb	Active Ctrb	Fund Weight (Average)	Benchmark Weight (Average)	Active Weight (Average)	Fund Total Return	Benchmark Total Return	GICS Sector Allocation Effect	Total Effect
MALTA	--	0.00%	(0.00%)	--	0.00%	(0.00%)		1.28%	--	(0.00%)
MAURITIUS	--	(0.02%)	0.02%	--	0.02%	(0.02%)		(70.67%)	--	0.02%
MEXICO	(0.42%)	(0.00%)	(0.42%)	1.03%	0.04%	0.99%	(39.73%)	(5.63%)	--	(0.29%)
NETHERLANDS	0.14%	(0.10%)	0.23%	1.34%	3.88%	(2.54%)	(7.46%)	(2.77%)	0.16%	0.22%
NEW ZEALAND	--	0.00%	(0.00%)	--	0.17%	(0.17%)		1.64%	--	(0.03%)
NIGERIA	--	(0.00%)	0.00%	--	0.11%	(0.11%)		(4.14%)	--	(0.01%)
NORWAY	(0.13%)	(0.13%)	0.01%	0.39%	0.89%	(0.50%)	(33.24%)	(14.67%)	0.02%	0.00%
PANAMA	(0.01%)	--	(0.01%)	0.07%	--	0.07%	(8.43%)		--	(0.01%)
PAPUA NEW GUINEA	(0.03%)	--	(0.03%)	0.07%	--	0.07%	(8.92%)		--	0.01%
PERU	(0.04%)	(0.00%)	(0.04%)	0.52%	0.00%	0.52%	(7.28%)	(41.48%)	--	0.13%
PHILIPPINES	(0.03%)	--	(0.03%)	0.17%	--	0.17%	(11.50%)		--	0.02%
POLAND	(0.01%)	(0.13%)	0.13%	0.02%	0.20%	(0.18%)	(13.21%)	(59.29%)	--	0.11%
PORTUGAL	--	(0.07%)	0.07%	--	0.20%	(0.20%)		(32.58%)	--	0.04%
ROMANIA	--	(0.15%)	0.15%	--	0.24%	(0.24%)		(57.29%)	--	0.12%
RUSSIAN FEDERATION	--	(0.00%)	0.00%	--	0.01%	(0.01%)		(20.89%)	--	0.00%
SINGAPORE	(0.53%)	(0.33%)	(0.21%)	1.95%	1.73%	0.22%	(26.55%)	(18.49%)	(0.08%)	(5.20%)
SOUTH AFRICA	(0.17%)	(0.23%)	0.06%	2.26%	2.40%	(0.14%)	(3.41%)	(9.59%)	0.05%	0.02%
SOUTH KOREA	(0.19%)	--	(0.19%)	3.10%	--	3.10%	14.38%		--	0.39%
SPAIN	(0.16%)	(0.08%)	(0.08%)	0.87%	1.73%	(0.86%)	(23.01%)	(5.02%)	(0.06%)	(0.26%)
SWEDEN	(0.52%)	(0.49%)	(0.02%)	1.94%	3.07%	(1.13%)	(14.68%)	(15.97%)	(0.06%)	(0.01%)
SWITZERLAND	(1.04%)	(0.89%)	(0.15%)	4.33%	4.06%	0.27%	(23.90%)	(21.07%)	(0.08%)	(0.41%)
TAIWAN	(0.64%)	(0.00%)	(0.64%)	0.70%	0.00%	0.70%	(61.85%)	(4.47%)	--	(0.45%)
THAILAND	(0.03%)	--	(0.03%)	0.57%	--	0.57%	1.68%		--	0.04%
TURKEY	(0.25%)	(0.00%)	(0.25%)	0.58%	0.03%	0.55%	(36.81%)	(9.97%)	--	(0.22%)
UNITED ARAB EMIRATES	--	(0.00%)	0.00%	--	0.00%	(0.00%)		(55.15%)	--	0.00%
UNITED KINGDOM	(1.37%)	(1.00%)	(0.37%)	18.82%	15.03%	3.80%	(6.78%)	(6.86%)	(0.04%)	(0.34%)
UNITED STATES	0.13%	(0.01%)	0.14%	2.57%	2.44%	0.14%	(1.89%)	0.29%	(0.01%)	(0.04%)
VIRGIN ISLANDS (BRITISH)	--	(0.00%)	0.00%	--	0.00%	(0.00%)		(46.90%)	--	0.00%
[Cash]	(0.26%)	--	(0.26%)	1.58%	--	1.58%	(5.84%)		--	(0.16%)
[Unassigned]	(0.00%)	0.00%	(0.00%)	(0.07%)	0.00%	(0.07%)	77,635,552,801, 667,250,000.00 %	0.65%	(0.03%)	4.59%
Portfolio	(14.44%)	(12.61%)	(1.83%)	100.00%	100.00%	--	(14.44%)	(12.61%)	(0.19%)	(1.83%)

Opturo - Performance & Attribution Report - GLOBAL_GROWTH / MSCIEAFE - Valuation Period: 03-Jan-2011 to 30-Dec-2011

GICS Sector Allocation Effect Graph

Total Effect Graph

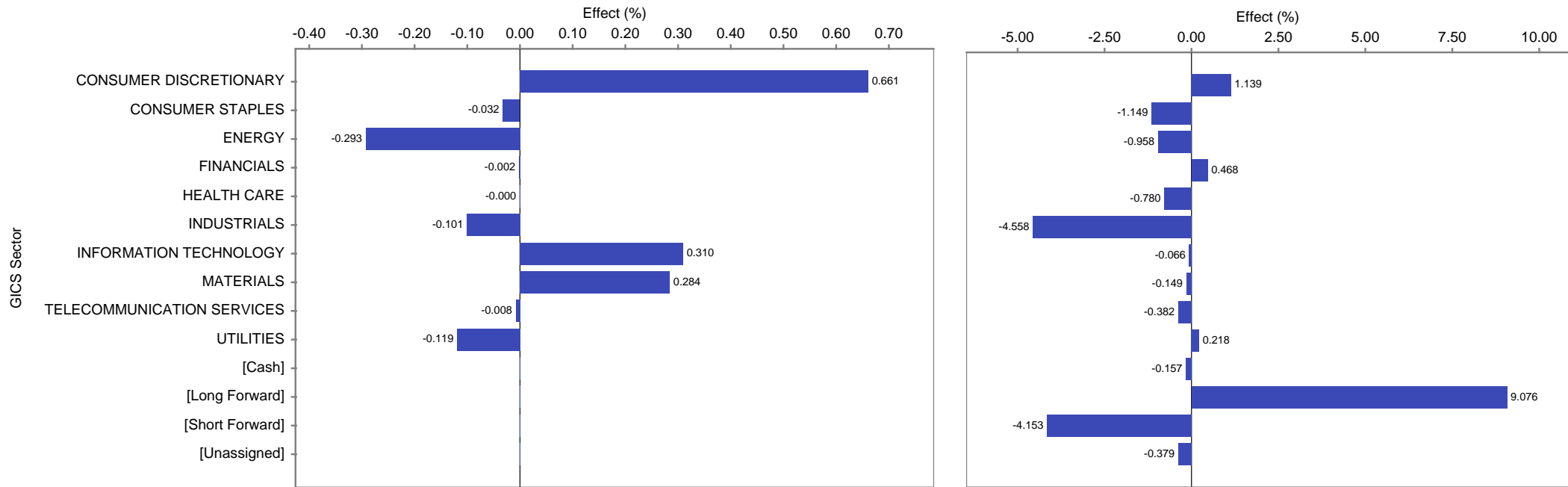


Opturo - Performance & Attribution Report - GLOBAL_GROWTH / MSCIEAFE - Valuation Period: 03-Jan-2011 to 30-Dec-2011

GICS Sector

GICS Sector	Fund Ctrb	Benchmark Ctrb	Active Ctrb	Fund Weight (Average)	Benchmark Weight (Average)	Active Weight (Average)	Fund Total Return	Benchmark Total Return	GICS Industry Allocation Effect	Total Effect	
CONSUMER DISCRETIONARY	(0.54%)	(1.64%)	1.09%	13.50%	11.17%	2.33%	(6.00%)	(14.61%)	0.66%	1.14%	
CONSUMER STAPLES	(0.33%)	0.34%	(0.66%)	6.96%	10.00%	(3.04%)	(6.87%)	3.50%	(0.03%)	(1.15%)	
ENERGY	(1.50%)	(0.10%)	(1.41%)	8.72%	7.97%	0.75%	(12.50%)	(1.26%)	(0.29%)	(0.96%)	
FINANCIALS	(4.30%)	(4.91%)	0.62%	20.53%	22.71%	(2.18%)	(20.53%)	(21.04%)	(0.00%)	0.47%	
HEALTH CARE	(0.64%)	0.33%	(0.97%)	7.83%	8.40%	(0.57%)	(6.93%)	4.29%	(0.00%)	(0.78%)	
INDUSTRIALS	(2.11%)	(2.13%)	0.02%	15.16%	13.94%	1.22%	(14.89%)	(15.11%)	(0.10%)	(4.56%)	
INFORMATION TECHNOLOGY	(1.31%)	(1.01%)	(0.29%)	9.98%	5.29%	4.70%	(10.20%)	(18.22%)	0.31%	(0.07%)	
MATERIALS	(2.70%)	(2.57%)	(0.12%)	9.19%	10.90%	(1.71%)	(26.23%)	(22.41%)	0.28%	(0.15%)	
TELECOMMUNICATION SERVICES	(0.27%)	(0.09%)	(0.18%)	3.54%	5.20%	(1.66%)	(12.47%)	(1.90%)	(0.01%)	(0.38%)	
UTILITIES	(0.41%)	(0.81%)	0.40%	2.79%	4.41%	(1.61%)	(8.58%)	(17.94%)	(0.12%)	0.22%	
[Cash]	(0.26%)	--	(0.26%)	1.58%	--	1.58%	(5.84%)	--	--	(0.16%)	
[Long Forward]	(0.21%)	--	(0.21%)	18.28%	--	18.28%	(1.18%)	--	--	9.08%	
[Short Forward]	0.21%	--	0.21%	(18.36%)	--	(18.36%)	(1.18%)	--	--	(4.15%)	
[Unassigned]	(0.08%)	(0.01%)	(0.07%)	0.27%	0.00%	0.27%	(14.24%)	(51.34%)	--	(0.38%)	
Portfolio	(14.44%)	(12.61%)	(1.83%)	100.00%	100.00%	--	(14.44%)	(12.61%)	0.70%	(1.83%)	
GICS Industry Allocation Effect Graph								Total Effect Graph			

Opturo - Performance & Attribution Report - GLOBAL_GROWTH / MSCIEAFE - Valuation Period: 03-Jan-2011 to 30-Dec-2011



Opturo - Performance & Attribution Report - GLOBAL_GROWTH / MSCIEAFE - Valuation Period: 03-Jan-2011 to 30-Dec-2011

GICS Industry

GICS Industry	Fund Ctrb	Benchmark Ctrb	Active Ctrb	Fund Weight (Average)	Benchmark Weight (Average)	Active Weight (Average)	Fund Total Return	Benchmark Total Return	Issue Selection Effect	Total Effect
AEROSPACE & DEFENSE	0.15%	(0.00%)	0.15%	1.74%	0.72%	1.01%	7.96%	(0.22%)	0.13%	0.15%
AIR FREIGHT & LOGISTICS	--	(0.05%)	0.05%	--	0.31%	(0.31%)		(16.99%)	--	0.02%
AIRLINES	(0.19%)	(0.10%)	(0.09%)	0.33%	0.22%	0.11%	(43.34%)	(37.61%)	--	(0.09%)
AUTO COMPONENTS	(0.10%)	(0.12%)	0.02%	1.57%	0.96%	0.60%	(6.49%)	(12.79%)	(0.02%)	0.16%
AUTOMOBILES	(0.15%)	(0.59%)	0.44%	2.22%	3.03%	(0.81%)	(12.36%)	(19.38%)	0.08%	0.33%
BEVERAGES	0.12%	0.09%	0.03%	1.77%	1.89%	(0.12%)	6.45%	5.23%	(0.00%)	(0.21%)
BIOTECHNOLOGY	0.03%	(0.06%)	0.09%	0.30%	0.30%	0.00%	13.28%	(19.46%)	0.00%	0.02%
BUILDING PRODUCTS	(0.12%)	(0.13%)	0.01%	0.30%	0.68%	(0.39%)	(26.94%)	(19.00%)	(0.01%)	(0.00%)
CAPITAL MARKETS	(0.33%)	(0.75%)	0.42%	1.92%	2.14%	(0.22%)	(16.57%)	(32.22%)	0.23%	(0.20%)
CHEMICALS	(0.91%)	(0.40%)	(0.52%)	5.02%	3.69%	1.33%	(20.03%)	(11.05%)	(0.31%)	(0.17%)
COMMERCIAL BANKS	(2.33%)	(2.74%)	0.41%	8.92%	11.25%	(2.33%)	(24.77%)	(23.19%)	(0.06%)	0.53%
COMMERCIAL SERVICES & SUPPLIES	0.14%	(0.05%)	0.19%	1.43%	0.81%	0.63%	11.52%	(6.11%)	0.15%	0.11%
COMMUNICATIONS EQUIPMENT	(0.09%)	(0.22%)	0.14%	0.39%	0.70%	(0.31%)	(1.67%)	(30.39%)	0.00%	(0.22%)
COMPUTERS & PERIPHERALS	(0.34%)	(0.11%)	(0.23%)	0.40%	0.41%	(0.01%)	(59.76%)	(23.69%)	--	(0.27%)
CONSTRUCTION & ENGINEERING	(0.04%)	(0.17%)	0.13%	0.65%	1.19%	(0.54%)	(15.72%)	(14.53%)	(0.01%)	(0.00%)
CONSTRUCTION MATERIALS	--	(0.14%)	0.14%	--	0.61%	(0.61%)		(21.61%)	--	0.07%
CONSUMER FINANCE	(0.26%)	0.01%	(0.27%)	0.43%	0.09%	0.34%	(54.62%)	4.83%	--	(0.22%)
CONTAINERS & PACKAGING	--	(0.00%)	0.00%	--	0.20%	(0.20%)		(1.90%)	--	(0.05%)
DISTRIBUTORS	0.01%	(0.05%)	0.06%	0.06%	0.21%	(0.15%)	2.87%	(20.59%)	0.00%	0.02%
DIVERSIFIED CONSUMER SERVICES	--	0.00%	(0.00%)	--	0.05%	(0.05%)		3.83%	--	(0.01%)
DIVERSIFIED FINANCIAL SERVICES	(0.30%)	(0.24%)	(0.06%)	1.19%	1.26%	(0.07%)	(22.26%)	(19.35%)	(0.07%)	0.05%
DIVERSIFIED TELECOMMUNICATION SERVICES	--	(0.25%)	0.25%	--	3.24%	(3.24%)		(8.01%)	--	(0.04%)
ELECTRIC UTILITIES	(0.08%)	(0.64%)	0.56%	0.70%	2.35%	(1.65%)	(6.00%)	(25.00%)	--	0.25%
ELECTRICAL EQUIPMENT	(0.75%)	(0.33%)	(0.42%)	1.22%	1.49%	(0.26%)	(41.73%)	(22.16%)	(0.06%)	(0.31%)
ELECTRONIC EQUIPMENT	(0.95%)	(0.26%)	(0.69%)	1.74%	1.31%	0.43%	(40.32%)	(18.55%)	(0.07%)	(0.85%)
ENERGY EQUIPMENT & SERVICES	(0.55%)	(0.19%)	(0.35%)	2.51%	1.03%	1.48%	(14.55%)	(18.14%)	(0.05%)	(0.29%)
FOOD & STAPLES RETAILING	(0.17%)	(0.11%)	(0.06%)	1.57%	2.17%	(0.60%)	(10.48%)	(5.40%)	(0.10%)	(0.06%)
FOOD PRODUCTS	(0.00%)	0.10%	(0.10%)	2.09%	3.74%	(1.65%)	(0.39%)	2.56%	0.02%	(0.33%)
GAS UTILITIES	--	0.02%	(0.02%)	--	0.45%	(0.45%)		6.17%	--	(0.09%)
HEALTH CARE EQUIPMENT & SUPPLIES	0.02%	(0.04%)	0.06%	2.32%	0.78%	1.53%	4.49%	(4.77%)	(0.01%)	0.05%
HEALTH CARE PROVIDERS & SERVICES	0.01%	0.01%	(0.01%)	0.79%	0.47%	0.32%	4.93%	2.83%	(0.03%)	0.02%
HEALTH CARE TECHNOLOGY	--	(0.00%)	0.00%	--	0.01%	(0.01%)		(3.17%)	--	(0.00%)
HOTELS	(0.19%)	(0.14%)	(0.05%)	1.59%	1.21%	0.37%	(11.25%)	(11.51%)	(0.15%)	(0.08%)
HOUSEHOLD DURABLES	(0.05%)	(0.33%)	0.28%	0.80%	0.93%	(0.13%)	(5.25%)	(30.45%)	0.08%	0.24%

Opturo - Performance & Attribution Report - GLOBAL_GROWTH / MSCIEAFE - Valuation Period: 03-Jan-2011 to 30-Dec-2011

GICS Industry	Fund Ctrb	Benchmark Ctrb	Active Ctrb	Fund Weight (Average)	Benchmark Weight (Average)	Active Weight (Average)	Fund Total Return	Benchmark Total Return	Issue Selection Effect	Total Effect
HOUSEHOLD PRODUCTS	(0.14%)	(0.02%)	(0.12%)	0.19%	0.49%	(0.29%)	(9.79%)	(3.96%)	(0.00%)	(0.09%)
INDEPENDENT POWER PRODUCERS & ENERGY TRADERS	0.15%	0.01%	0.15%	0.23%	0.20%	0.03%	37.45%	2.19%	0.03%	0.15%
INDUSTRIAL CONGLOMERATES	(0.07%)	(0.36%)	0.29%	0.72%	1.64%	(0.92%)	(4.42%)	(21.59%)	0.01%	0.33%
INSURANCE	(0.38%)	(0.53%)	0.15%	4.21%	4.15%	0.06%	(12.47%)	(13.40%)	(0.05%)	0.20%
INTERNET & CATALOG RETAIL	(0.14%)	(0.01%)	(0.13%)	0.43%	0.14%	0.28%	(63.31%)	(6.89%)	(0.13%)	(0.12%)
INTERNET SOFTWARE & SERVICES	0.33%	0.00%	0.33%	2.17%	0.17%	2.00%	13.79%	3.33%	0.24%	0.74%
IT SERVICES	(0.25%)	(0.07%)	(0.18%)	0.74%	0.39%	0.35%	(31.53%)	(16.83%)	--	(0.14%)
LEISURE EQUIPMENT & PRODUCTS	--	0.00%	(0.00%)	--	0.24%	(0.24%)		1.24%	--	(0.05%)
LIFE SCIENCES TOOLS & SERVICES	--	(0.02%)	0.02%	--	0.11%	(0.11%)		(19.88%)	--	0.01%
MACHINERY	(0.97%)	(0.57%)	(0.40%)	6.28%	3.26%	3.03%	(12.91%)	(17.50%)	0.26%	0.07%
MARINE	(0.02%)	(0.13%)	0.11%	0.03%	0.36%	(0.33%)	(6.54%)	(31.97%)	--	(0.04%)
MEDIA	0.01%	(0.15%)	0.16%	0.70%	1.64%	(0.95%)	15.87%	(9.88%)	(0.01%)	0.01%
METALS & MINING	(1.53%)	(1.97%)	0.44%	3.78%	6.06%	(2.28%)	(30.97%)	(29.42%)	0.23%	0.07%
MULTI-UTILITIES	(0.49%)	(0.21%)	(0.27%)	1.87%	1.28%	0.59%	(21.68%)	(17.41%)	(0.08%)	(0.10%)
MULTILINE RETAIL	0.12%	(0.03%)	0.15%	1.07%	0.43%	0.64%	17.35%	(7.92%)	0.18%	0.21%
OFFICE ELECTRONICS	(0.17%)	(0.11%)	(0.06%)	0.24%	0.58%	(0.34%)	(20.29%)	(16.54%)	0.00%	(0.12%)
OIL	(0.96%)	0.10%	(1.05%)	6.21%	6.94%	(0.73%)	(12.46%)	1.45%	(0.05%)	(0.67%)
PAPER & FOREST PRODUCTS	(0.25%)	(0.07%)	(0.19%)	0.39%	0.33%	0.06%	(43.94%)	(20.14%)	0.00%	(0.06%)
PERSONAL PRODUCTS	(0.13%)	(0.02%)	(0.12%)	1.34%	0.50%	0.84%	(25.13%)	(3.09%)	0.02%	(0.11%)
PHARMACEUTICALS	(0.70%)	0.44%	(1.13%)	4.42%	6.74%	(2.32%)	(14.27%)	7.14%	(0.02%)	(0.89%)
PROFESSIONAL SERVICES	(0.03%)	(0.07%)	0.04%	0.93%	0.58%	0.35%	(10.39%)	(11.93%)	0.03%	0.01%
REAL ESTATE	--	--	--	--	--	--	--	--	--	--
REAL ESTATE INVESTMENT TRUSTS (REITS)	--	(0.18%)	0.18%	--	1.81%	(1.81%)		(9.91%)	--	(0.18%)
REAL ESTATE MANAGEMENT & DEVELOPMENT	(0.69%)	(0.49%)	(0.20%)	3.75%	2.00%	1.75%	(20.35%)	(22.83%)	0.20%	0.30%
ROAD & RAIL	0.03%	0.03%	0.00%	0.23%	0.93%	(0.70%)	6.56%	2.66%	--	(0.13%)
SEMICONDUCTOR EQUIPMENT & PRODUCTS -- DISCONTINUED	--	--	--	--	--	--	--	--	--	--
SEMICONDUCTORS & SEMICONDUCTOR EQUIPMENT	(0.09%)	(0.14%)	0.05%	2.08%	0.75%	1.33%	(7.59%)	(18.77%)	0.03%	0.37%
SOFTWARE	0.25%	(0.11%)	0.35%	2.22%	0.98%	1.25%	20.82%	(10.61%)	0.12%	0.42%
SPECIALTY RETAIL	0.16%	(0.04%)	0.20%	3.92%	1.10%	2.82%	4.31%	(4.08%)	0.03%	0.51%
TEXTILES	(0.20%)	(0.17%)	(0.03%)	1.14%	1.22%	(0.07%)	(17.64%)	(14.04%)	(0.06%)	(0.08%)
THRIFTS & MORTGAGE FINANCE	(0.01%)	(0.00%)	(0.00%)	0.11%	0.02%	0.10%	(7.40%)	(21.22%)	--	0.01%
TOBACCO	--	0.30%	(0.30%)	--	1.22%	(1.22%)		28.83%	--	(0.35%)
TRADING COMPANIES & DISTRIBUTORS	(0.17%)	(0.14%)	(0.03%)	0.81%	1.29%	(0.48%)	(29.25%)	(10.81%)	(0.03%)	(0.17%)

Opturo - Performance & Attribution Report - GLOBAL_GROWTH / MSCIEAFE - Valuation Period: 03-Jan-2011 to 30-Dec-2011

GICS Industry	Fund Ctrb	Benchmark Ctrb	Active Ctrb	Fund Weight (Average)	Benchmark Weight (Average)	Active Weight (Average)	Fund Total Return	Benchmark Total Return	Issue Selection Effect	Total Effect
TRANSPORTATION INFRASTRUCTURE	(0.07%)	(0.04%)	(0.02%)	0.50%	0.48%	0.02%	(11.85%)	(7.96%)	(0.02%)	(4.49%)
WATER UTILITIES	--	0.01%	(0.01%)	--	0.14%	(0.14%)		8.35%	--	0.02%
WIRELESS TELECOMMUNICATION SERVICES	(0.27%)	0.16%	(0.43%)	3.54%	1.97%	1.57%	(12.47%)	9.01%	(0.14%)	(0.35%)
[Cash]	(0.26%)	--	(0.26%)	1.58%	--	1.58%	(5.84%)		--	(0.16%)
[Long Forward]	(0.21%)	--	(0.21%)	18.28%	--	18.28%	(1.18%)		--	9.08%
[Short Forward]	0.21%	--	0.21%	(18.36%)	--	(18.36%)	(1.18%)		--	(4.15%)
[Unassigned]	(0.08%)	(0.01%)	(0.07%)	0.27%	0.00%	0.27%	(14.24%)	(51.34%)	--	(0.38%)
Portfolio	(14.44%)	(12.61%)	(1.83%)	100.00%	100.00%	--	(14.44%)	(12.61%)	0.53%	(1.83%)

Opturo - Performance & Attribution Report - GLOBAL_GROWTH / MSCIEAFE - Valuation Period: 03-Jan-2011 to 30-Dec-2011

Issue Selection Effect Graph

Total Effect Graph

